



SURVEY PROFILE

+234 811 270 4444

www.rotawn.com

10B1, Sarumoh Oladosu Cl, Lekki, Lagos

Rotawn Energy is a dynamic and forward-thinking energy solutions provider, renowned for its expertise in delivering cutting-edge hydrographic survey services. Our commitment to excellence, innovation, and sustainability sets us apart as industry leaders. We offer a comprehensive suite of survey services designed to meet the diverse needs of our clients across the globe.

OUR MISSION

At Rotawn Energy, our mission is to provide precise, reliable, and efficient hydrographic survey solutions that empower our clients to make informed decisions, optimize operations, and ensure the safety and sustainability of their projects. We are dedicated to maintaining the highest standards of quality, integrity, and customer satisfaction.

OUR VISION

To be the long-lasting partner of choice to our clients and become the industry leader for providing turn-key solutions to our clients.

OUR VALUES

We are proud to epitomize: Uncompromising Integrity, Professional Competence, Safety, Highest Quality Standards, Cost Effectiveness.

KEY TEAM PLAYERS

We employ diverse, experienced management executives and consultants who understand the industry of our clients, related industry issues, and have an in-depth understanding of business applications.





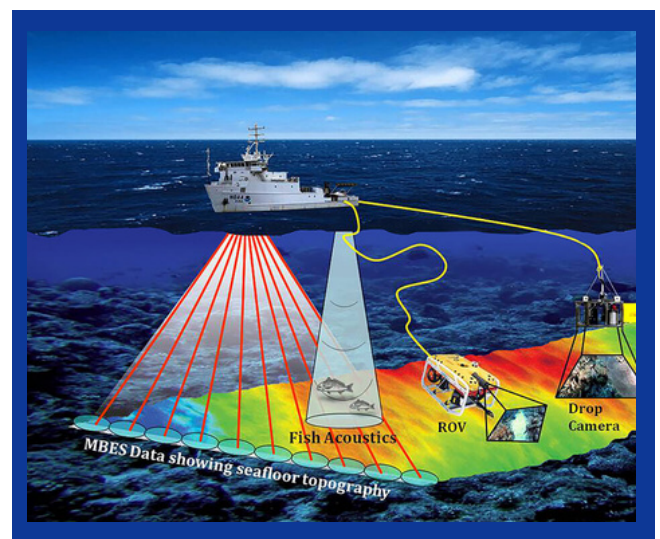
BATHYMETRIC SURVEYS

Utilizing advanced sonar technology, we conduct detailed bathymetric surveys to map underwater topography. Our surveys provide critical data for navigation, dredging, and marine construction projects.



SEABED MAPPING

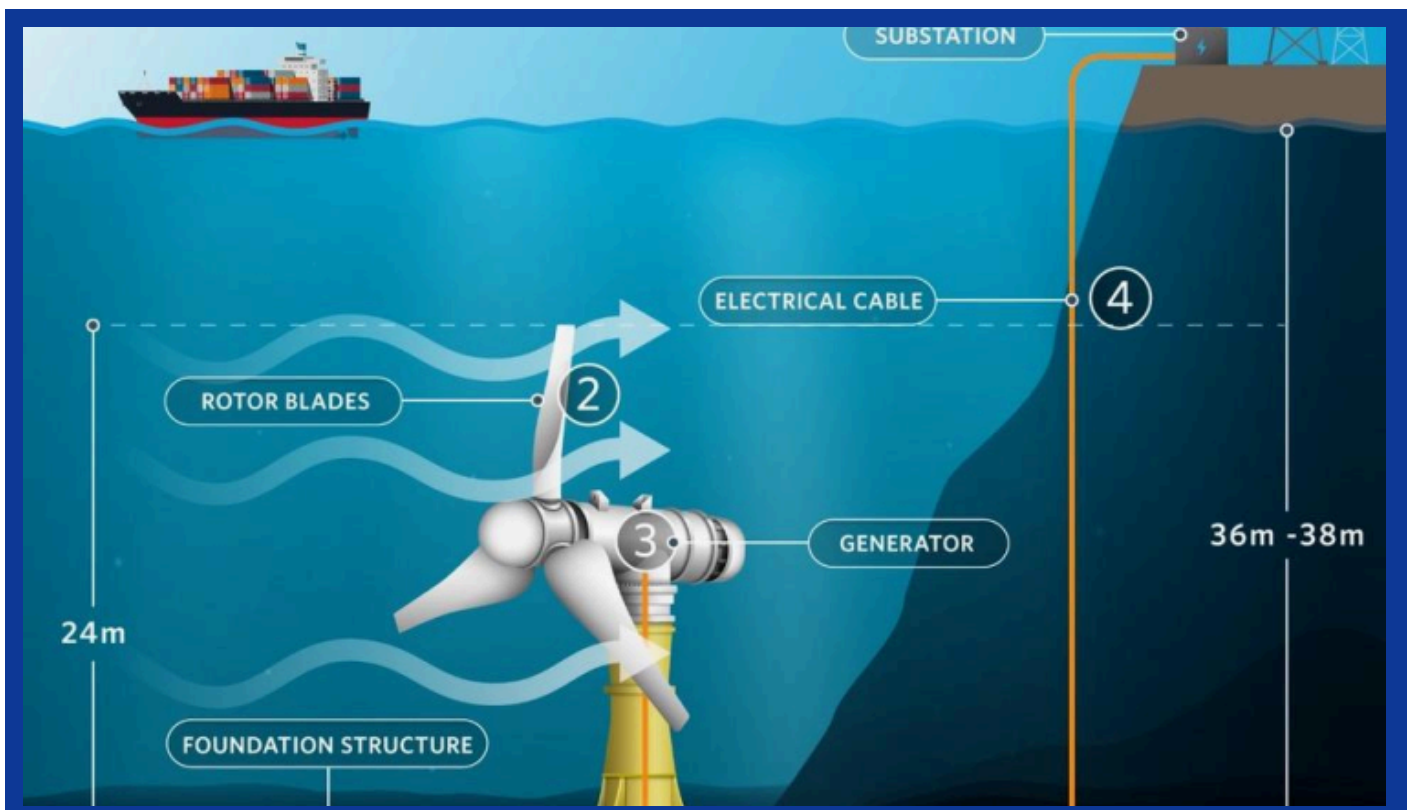
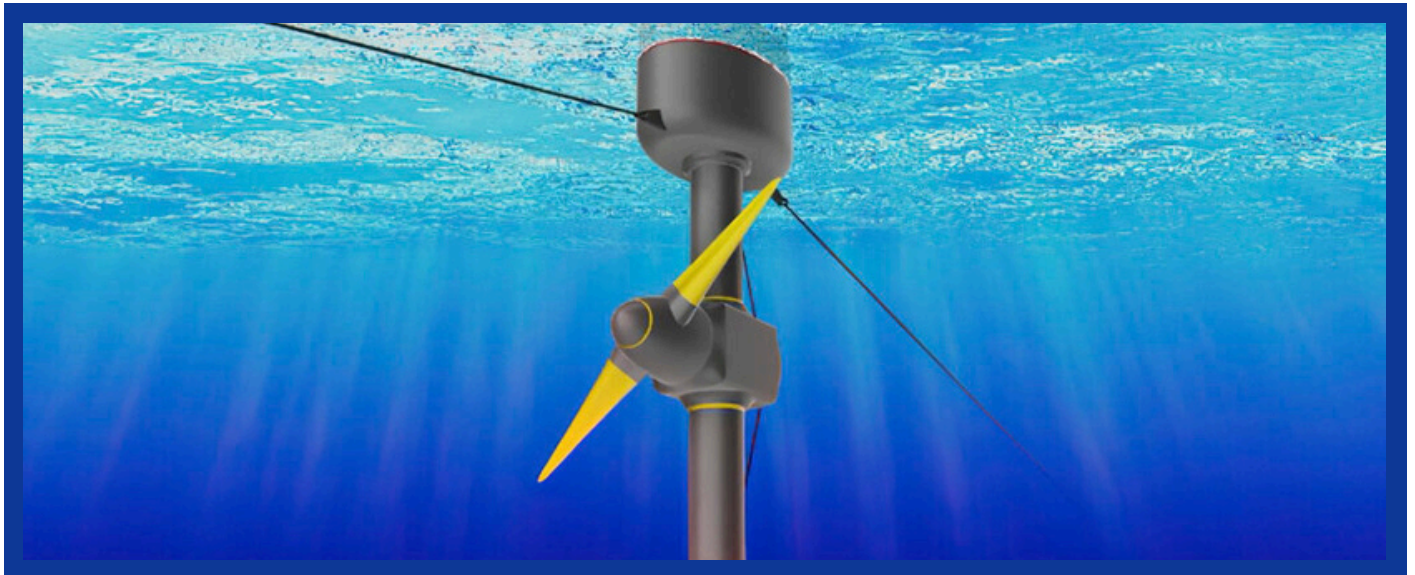
We offer comprehensive seabed mapping services, delivering high-resolution images and data essential for environmental assessments, pipeline routing, and resource exploration.



TIDAL AND CURRENT ANALYSIS

Our experts analyze tidal patterns and currents to support the design and operation of coastal and offshore structures, ensuring stability and safety.

Tidal and current analyses are essential for producing precise hydrographic survey results, ensuring that the final data reflects true underwater conditions rather than being skewed by environmental factors.

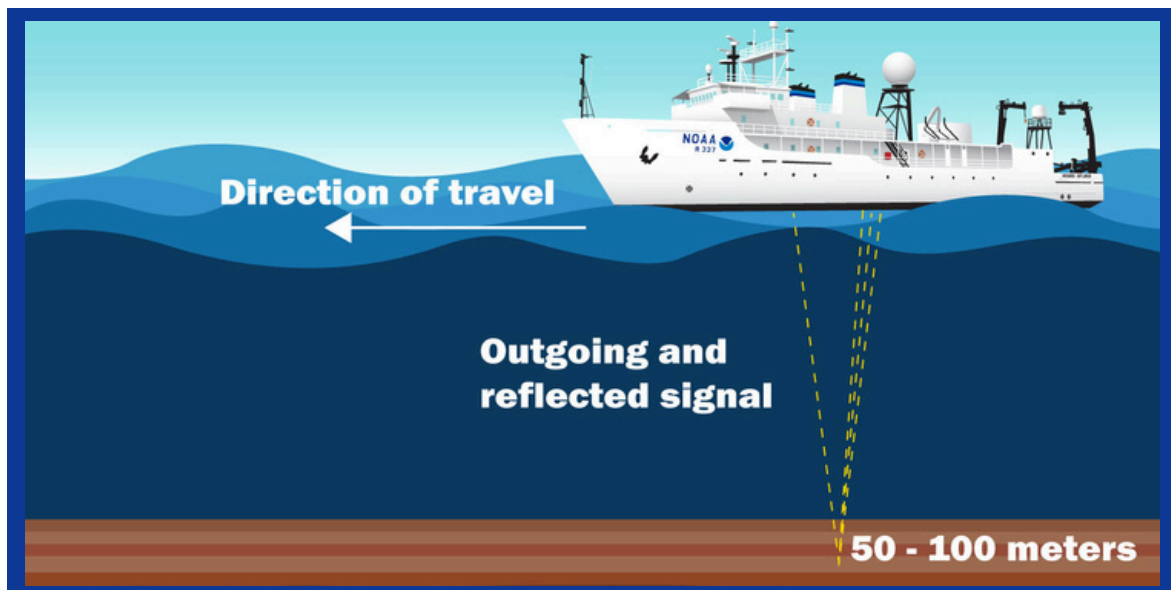
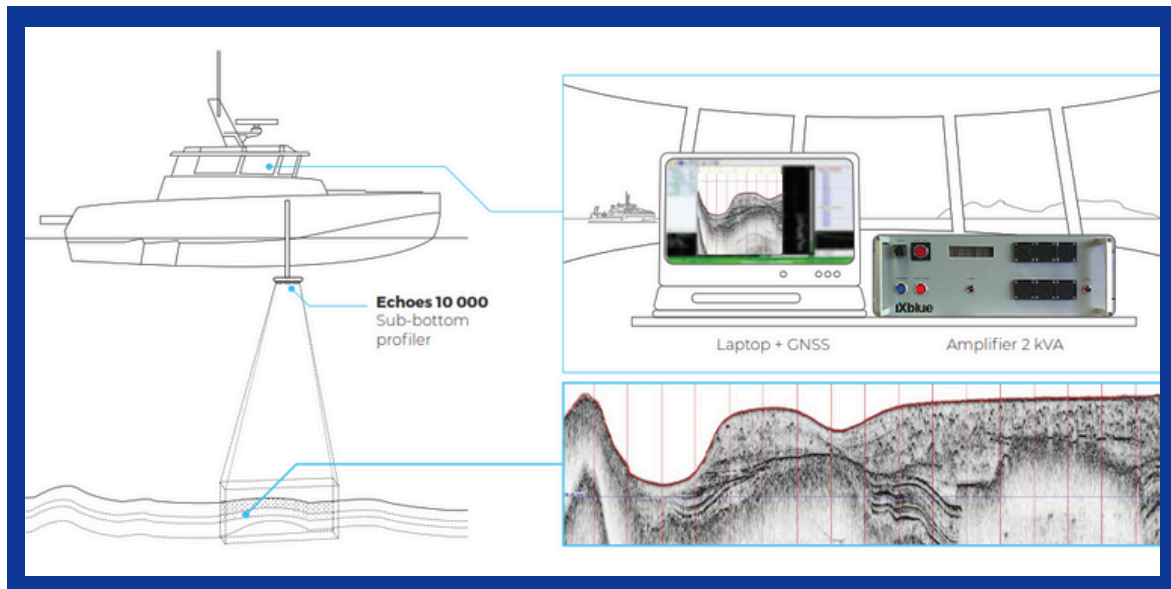


SUB-BOTTOM PROFILING

In construction, hydraulic marine sands play a pivotal role as a crucial component in the aggregate mix used for concrete production. Builders and contractors rely on sands of diverse sizes and compositions to meet the specific requirements of their projects.

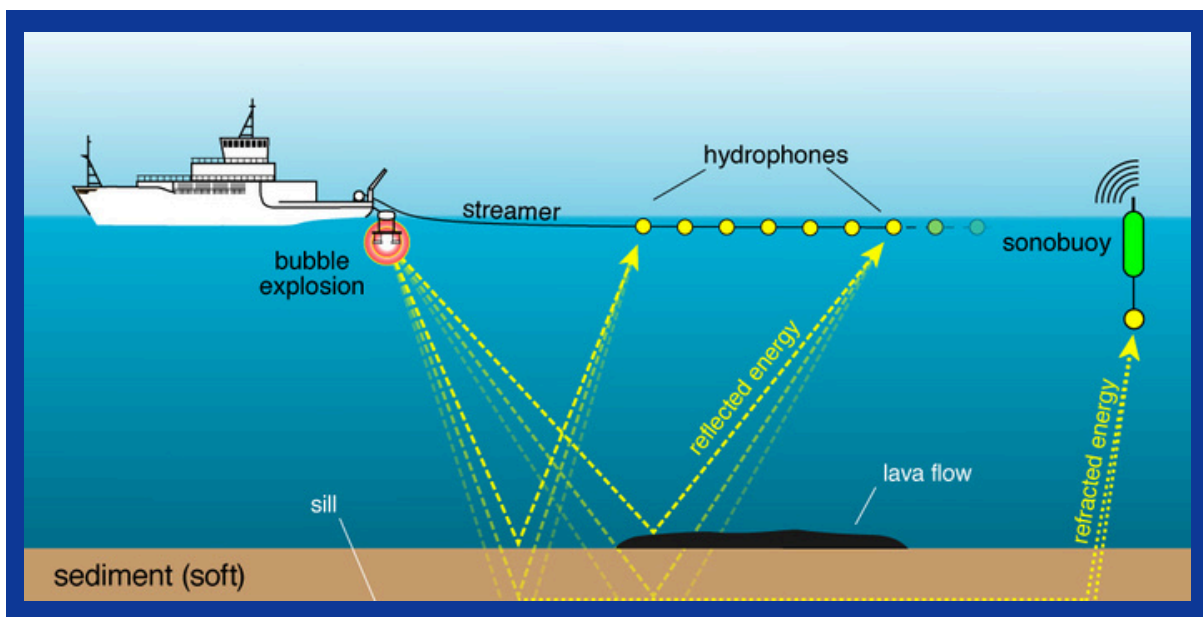
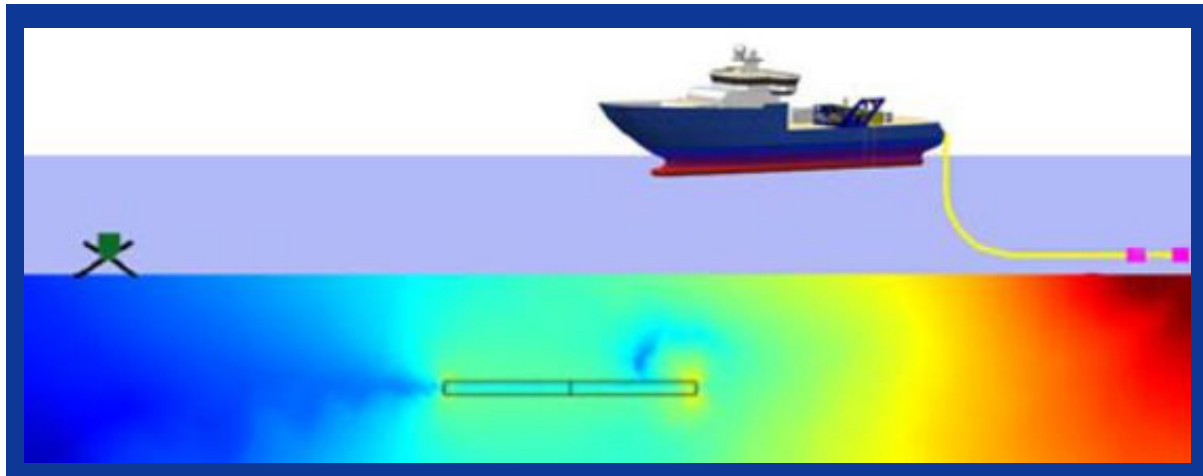
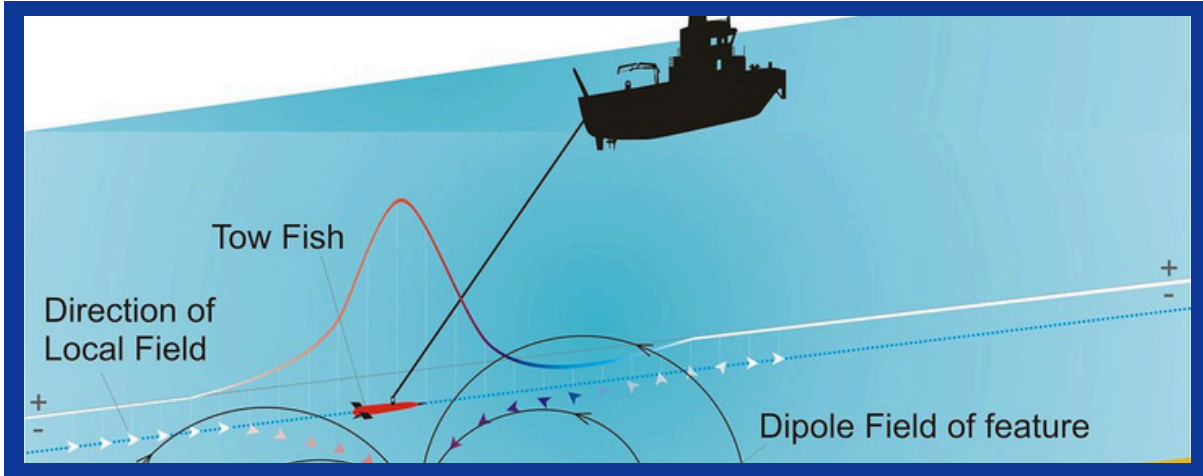
We can dredge various types of sand stockpiles to meet the needs of the construction industry. Strategic stockpiles have been pumped for various ventures.

This service is central to our activities. The sand stockpiling activities are backed up by adequate feasibility studies and economic viability tests.



MAGNETOMETER SURVEYS

Our magnetometer surveys detect and map magnetic anomalies, essential for locating ferrous objects such as pipelines, cables, and archaeological sites.



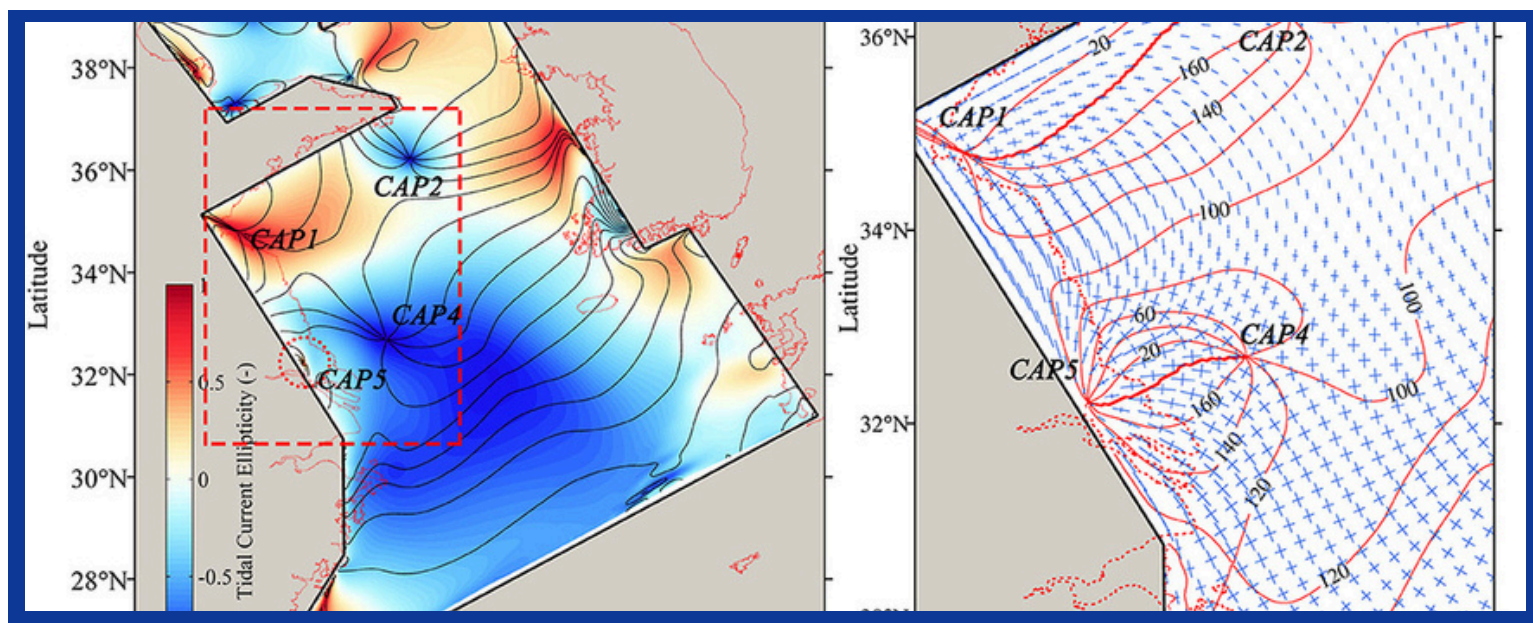
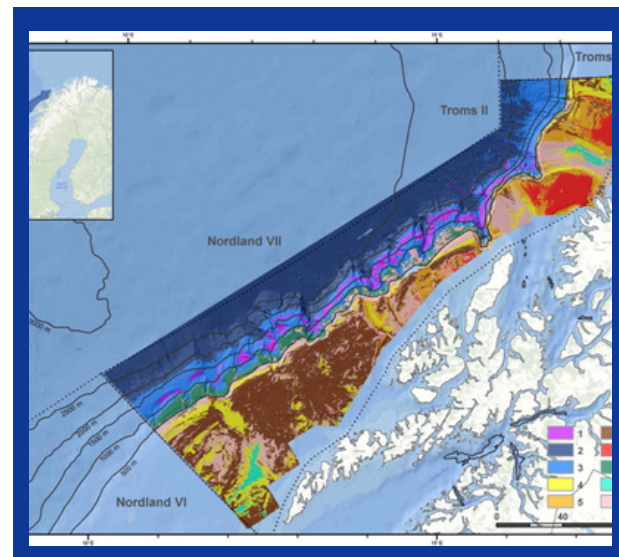
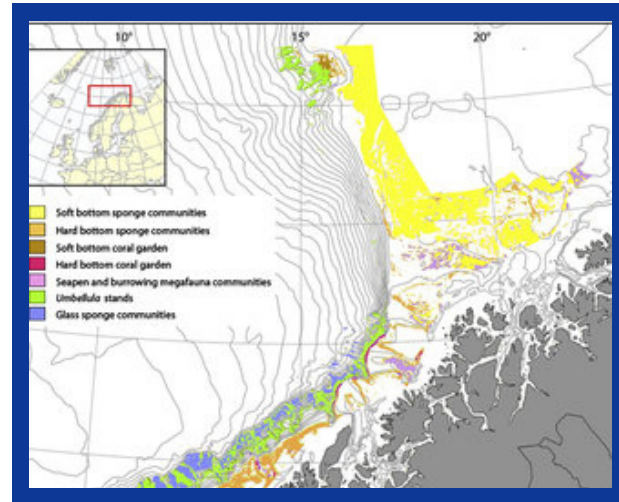
HABITAT MAPPING

We conduct habitat mapping to assess and monitor marine ecosystems, supporting environmental impact assessments and conservation efforts.

The first step in creating a habitat map is to use a mathematical formula to determine the “geographic coordinates to Earth’s surface” and represent them in two dimensions, which becomes a projection that imitates or estimates Earth’s shape.

Once the map is created, then a coordinate system is used to assign points on the flat surface of the map (usually longitude and latitude). Once this system is in place, the community can determine which priorities and characteristics will be a part of the habitat map.

A team of experts is then dispersed to gather information about the habitats in that area as well as species composition or any other pertinent information.



Technology and Innovation:

Rotawn Energy is at the forefront of technological innovation, utilizing state-of-the-art equipment and software to deliver accurate and reliable survey data. Our investment in advanced technology, such as multi-beam echo sounders, side-scan sonar, and unmanned survey vessels, enables us to provide unparalleled service quality and efficiency.

Our Team:

Our success is driven by a team of highly skilled and experienced professionals. Our hydrographers, geophysicists, marine biologists, and environmental scientists are dedicated to delivering exceptional service and ensuring the success of our clients' projects. We are committed to continuous professional development and staying abreast of industry advancements.

Quality and Safety:

At Rotawn Energy, quality and safety are paramount. We adhere to stringent quality control measures and industry standards to ensure the accuracy and reliability of our survey data. Our robust safety protocols and commitment to environmental stewardship ensure that our operations are conducted responsibly and sustainably.

Client-Centric Approach:

We pride ourselves on our client-centric approach, working closely with our clients to understand their unique requirements and deliver tailored solutions. Our focus on building long-term partnerships and providing exceptional customer service has earned us a reputation for reliability and trustworthiness.

Conclusion:

Rotawn Energy is dedicated to delivering world-class hydrographic survey services that drive innovation and excellence in the energy sector. With our cutting-edge technology, expert team, and unwavering commitment to quality and safety, we are the preferred partner for clients seeking reliable and precise survey solutions.

Discover the Rotawn Energy difference and let us help you navigate the complexities of your hydrographic survey needs with confidence and precision.

EQUIPMENT



Kongsberg EM 3002



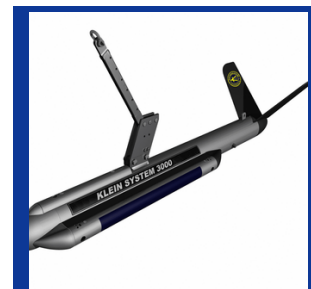
Odom Echotrac
CV100



Innomar SES-2000
Standard



Edgetech 4200



L-3 Klein
System 3000



SonTek
Argonaut-ADV



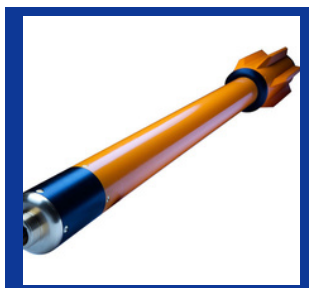
Deep Trekker
DTG2



Hach Hydrolab
DS5X



Geosense Geo-
CPT 60



Marine
Magnetics
SeaSPY



Geometrics G-880



Seaviewer Sea-
Drop 950

Thank You



Contact Us



info@rotawn.com



+234 811 270 4444



www.rotawn.com



10b1, Sarumoh Oladosu Cl, Lekki, Lagos